

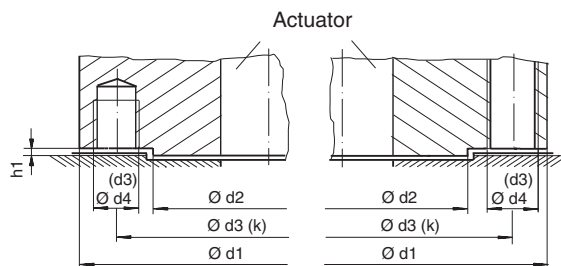
Comparison EN ISO 5210/EN ISO 5211 with DIN 3210 and DIN 3338

EN ISO 5210 Multi-turn valve actuator attachments

EN ISO 5211 Part-turn actuator attachments

DIN 3210 Types of electric actuators for valves

DIN 3338 Multi-turn actuator attachment, C-type



Designations deviating from EN ISO are mentioned in brackets

Flange abbreviation			Dimensions (in mm)										Quantity of screws or bolts	
EN ISO 5210	EN ISO 5211	DIN 3210	EN ISO 5210 5211	DIN 3210	EN ISO 5210 5211	DIN 3210	EN ISO 5210 5211	DIN 3210	EN ISO 5210 5211	DIN 3210	EN ISO 5210 5211	DIN 3210	EN ISO 5210 5211	DIN 3210
DIN 3338			DIN 3338		DIN 3338		DIN 3338		DIN 3338		DIN 3338		DIN 3338	DIN 3338
			d1	d1	d2	d2	d3	(k)	d4	(d3)	h1 max.	h1 max.		
-	F03	-	46	-	25	-	36	-	M5	-	3	-	4	-
-	F04	-	54	-	30	-	42	-	M5	-	3	-	4	-
-	F05	-	65	-	35	-	50	-	M6	-	3	-	4	-
F07	F07	-	90	-	55	-	70	-	M8	-	3	-	4	-
F10	F10	G0	125	125	70	60	102	102	M10	M10	3	3	4	4
F12	F12	-	150	-	85	-	125	-	M12	-	3	-	4	-
F14	F14	G1/2	175	175	100	100	140	140	M16	M16	4	4	4	4
F16	F16	G3	210	210	130	130	165	165	M20	M20	5	5	4	4
F25	F25	G4	300	300	200	160	254	254	M16	M16	5	5	8	8
F30	F30	G5	350	350	230	180	298	300	M20	M20	5	5	8	8
F35	F35	G6	415	410	260	220	356	356	M30	M30	5	5	8	8
F40	F40	G7	475	475	300	230	406	406	M36	M36	8	8	8	8
-	F48	-	560	-	370	-	483	-	M36	-	8	-	12	-
-	F60	-	686	-	470	-	603	-	M36	-	8	-	20	-

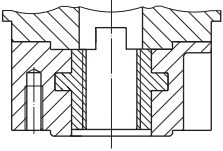
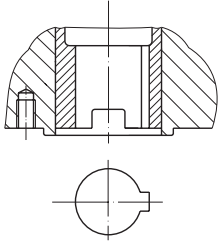
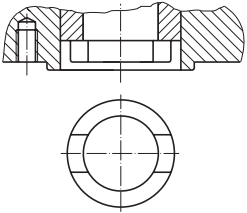
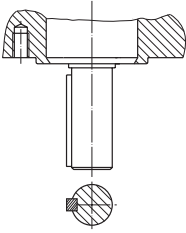
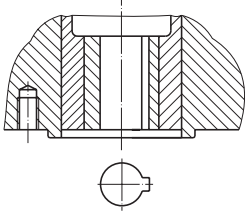
Different dimensions between EN ISO 5210/EN ISO 5211/DIN 3338 and DIN 3210

Arrangement of holes d4 (d3)



EN ISO 5210	F07 – F16	F25 – F40	-	-
EN ISO 5211	F03 – F16	F25 – F40	F48	F60
DIN 3210	G0 – G3	G4 – G7	-	-
DIN 3338	F07 – F16	F25 – F40	-	-

We reserve the right to alter data according to improvements made. Previous documents become invalid with the issue of this document.

	Designation			Transmission of torque	Thrust possible	Application
	EN ISO 5210	DIN 3210	DIN 3338			
Stem nut 	A	A	-	X	X	rising, non-rotating valve stem
Plug sleeve 	B 1 B 2	B	-	X	-	rotating, non-rising valve stem or rising, non-rotating valve stem
Dog coupling 	-	C	C	X	-	rotating, non-rising valve stem or rising, non-rotating valve stem
Shaft coupling 	-	D	-	X	-	operation by rods or coupling
Bore with keyway 	B 3 B 4	E	-	X	-	rotating, non-rising valve stem

We reserve the right to alter data according to improvements made. Previous documents become invalid with the issue of this document.